

Conference 2018
Practical Pearls
in Long Term Care



Ontario
Long Term Care
Clinicians

OCTOBER 19—21, 2018

TORONTO, ONTARIO

SHERATON CENTRE


TORONTO HOTEL

**REGISTRATION
AND PROGRAM
GUIDE 2018**



Ontario Long Term Care Clinicians
1143 Wentworth St. West, Suite 202
Oshawa, ON L1J 8P7
office@oltcc.ca

T: 905-404-9545
F: 905-404-3727

 www.oltcc.ca
 @OnLTCC

OLTCC PRESIDENT'S MESSAGE



Ontario Long Term Care Clinicians

CONFERENCE COMMITTEE CHAIRS' MESSAGE



I invite you to attend the Practical Pearls in Long-Term Care, annual conference for the Ontario Long-Term Care Clinicians (OLTCC). This is the largest conference for Long-Term Care physicians, Nurse Practitioners and Pharmacists in Canada. I extend a special welcome to those who travel from out of province and country.

The Vision of OLTCC is that "all Ontarians in Long-Term Care will receive excellent care". This is an eventful year for those who practice in Long-Term Care. In preparation for the provincial election, the government's action plan for seniors calls for expansion of long-term care beds, 5,000 over the next year and more for rest of the next decade. In addition, there is the promise of redevelopment of many existing homes. The Public Hearings for the Long-Term Care Inquiry began in June and will continue over several months. OLTCC is a participant in this important examination of the safety and security of our Long-Term care homes.

The Board of Directors participated in a strategic planning session in March. The strategic plan sets out achievable goals for the next two to ten years. Short-term goals are greater communication, networking, engagement, advocacy, visibility and growth. In April, there was another successful Medical Director Course where enrolment exceeded expectation.

I commend Dr. Kristof Lorand and the Conference Planning Committee for a program that is practical and interactive. The challenge each year is to build on the success of past conferences while offering new, current and relevant presentations.

In addition to the primary goal of education, the conference is an excellent opportunity to catch up with the challenges and changes for the care of our nursing home residents. It is a special opportunity to interact with colleagues and share in the excellence in Long-Term Care.

Fred Mather, MD, CCFP
President, OLTCC



The 2018 OLTCC Annual Conference continues its focus on practical approaches to clinical issues in Long-Term Care. The OLTCC Conference Committee felt that it is important to continue centering on concrete clinical approaches while providing the best available evidence in Long-Term Care. Hence the permanent renaming of our Annual Conference – "Practical Pearls in LTC."

The first Conference Day on Friday builds on last year's successful implementation of half/ full day clinical workshops. We will be recommending clinical workshops on high yield issues like Deprescribing, Management of Behavioural and Psychological Symptoms of Dementia, Diabetes, Palliative care, Choosing Wisely in LTC, and Music Therapy. The IDEAS workshop on LTC Quality Improvement and the OLTCC LTC Attending Physician Primer workshop are being offered as full day learning opportunities by the OLTCC's Medical Director Curriculum Committee.

We are pleased to have Dr. Joshua Tepper, President and CEO of Health Quality Ontario as our Keynote Speaker focusing on the importance of Quality Improvement in LTC. Our Saturday plenaries will encompass presentations on Antibiotic stewardship and Incontinence. Sunday plenaries will bring engaging speakers on Immunization and CMPA Communication strategies in LTC. Our "Clinical Complexities in LTC" panel is returning on Saturday with the same determined objective to provide an open forum for debating clinical topics. We are implementing a new panel format on Sunday where topics of strategic importance for OLTCC will be presented in a rapid-fire format. Our one-hour workshops on Saturday and Sunday bring diverse presentations on a variety of topics: Advance Care Planning, Frailty, Top Articles, Time Management in LTC and others.

I am extending an invitation of joining us for this great opportunity to meet with your colleagues and interact with experts in LTC.

Join us at Ontario's flagship LTC Conference in October 2018!

Lorand Kristof, MD, MSc, CCFP (COE)
2018 Conference Chair

BOARD OF DIRECTORS, 2018

| | | |
|-----------------------|--------------|----------|
| President | Fred | Mather |
| Past President | Evelyn | Williams |
| Vice President | Louis Joseph | Kennedy |
| Secretary | Julie | Auger |
| Treasurer | Ross | Moncur |
| Board Member | Robert | Cooper |
| Board Member | Lorand | Kristof |
| Board Member | Philip | McGarry |
| Board Member | Nancy | McKeough |
| Board Member | Kerstin | Mossman |
| Board Member | Ben | Robert |

CONFERENCE COMMITTEE, 2018

| | | |
|---------------|---------|----------|
| Chair | Lorand | Kristof |
| Member | Louis | Kennedy |
| Member | Fred | Mather |
| Member | Nancy | McKeough |
| Member | Kerstin | Mossman |
| Member | Evelyn | Williams |



OLTCC OFFICE

1143 Wentworth St. W. Suite 202
Oshawa, ON L1J 8P7
T: 905-404-9545
F: 905-404-3727
office@oltcc.ca
www.oltcc.ca

IMPORTANT DATES & ACTIVITIES

| | |
|--|---------------------------------------|
| Member Early Bird Rate Ends | Monday September 16, 2018 |
| Regular Rates Apply | Up to Friday October 12, 2018 |
| Hotel Cut Off Date for Room Reservations | Monday September 17, 2018 |
| Cancellations Accepted, with a \$60.00 Fee | To Friday September 22, 2018 |
| Delegate Substitution Policy Applies, no Fee | Up to Friday October 6, 2018 |
| Delegate Substitution Policy Applies, \$60.00 Fee | From Saturday October 7, 2018 |
| Late & Onsite Rates Apply | From Saturday October 13, 2018 |



SCHEDULE OF ACTIVITIES

Onsite Registration Hours

| | |
|---------------------|-------------------|
| Friday October 19 | 7:00 am — 6:00 pm |
| Saturday October 20 | 6:30 am — 5:30 pm |
| Sunday October 21 | 7:00 am — 4:00 pm |

Friday October 19

| | |
|--------------------------|---------------------|
| Registration | 7:00 am — 6:00 pm |
| Continental Breakfast | 7:30 am — 9:00 am |
| Full Day Workshops | 8:45 am — 4:15 pm |
| Attending Physician Wrks | 8:00 am — 4:15 pm |
| Half Day Workshops AM | 8:45 am — 12:00 pm |
| Half Day Workshops PM | 1:00 pm — 4:15 pm |
| Refreshment Break AM | 10:15 am — 10:30 am |
| Refreshment Break PM | 2:30 pm — 2:45 pm |
| Luncheon | 12:00 pm — 1:00 pm |
| Luncheon, Primer Wrks | 12:00 pm — 12:45 pm |
| Reception | 4:15 pm — 6:00 pm |

Saturday October 20

| | |
|---------------------------|---------------------|
| Registration | 6:30 am — 5:30 pm |
| Breakfast | 6:30 am — 8:30 am |
| Symposium | 7:00 am — 8:00 am |
| Opening Remarks | 8:00 am — 8:15 am |
| Plenary Sessions | 8:15 am — 9:15 am |
| Advocacy Briefing Report | 9:15 am — 9:30 am |
| Break, & Exhibits | 9:30 am — 10:30 am |
| Attended Poster Session | 9:30 am — 10:30 am |
| Plenary | 10:30 am — 11:30 am |
| Award Presentations | 11:30 am — 12:00 pm |
| Lunch, Exhibits & Posters | 12:00 pm — 1:00 pm |
| Panel Discussion | 1:00 pm — 2:00 pm |
| Concurrent Workshops | 2:00 pm — 3:00 pm |
| Break, Exhibit & Posters | 3:00 pm — 3:30 pm |
| Concurrent Workshops | 3:30 pm — 4:30 pm |
| OLTCC AGM | 4:30 pm — 5:00 pm |
| OLTCP AGM | 5:00 pm — 5:15 pm |

Sunday October 21

| | |
|---------------------------|---------------------|
| Registration | 7:00 am — 4:00 pm |
| Breakfast | 7:00 am — 8:30 am |
| Opening Remarks | 8:15 am — 8:20 am |
| OMA Report | 8:20 am — 8:30 am |
| OLTCC Report | 8:30 am — 8:45 am |
| Plenary Session AM | 8:45 am — 9:45 am |
| Panel & Plenary PM | 1:30 pm — 3:15 pm |
| Concurrent Workshops | 9:45 am — 10:45 am |
| Break, Posters & Exhibits | 10:45 am — 11:30 pm |
| Concurrent Workshops | 11:30 am — 12:30 am |
| Lunch, Posters & Exhibits | 12:30 pm — 1:30 pm |
| MD Course Luncheon | 12:30 pm — 1:30 pm |

(Invited guests only)

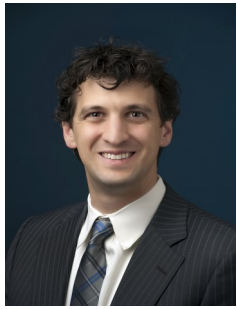
HOW TO REGISTER

1. Choose the package that you want and correctly identify the fee category (member, non-member, student) and the date you are registering.
2. Choose your workshops from the list provided. Workshops will be confirmed once registration is complete.
3. Go online to www.oltcc.ca for the online registration option. If you are a member, log in using your login and password for the OLTCC registration system OR,
4. Register by mail, by completing the registration form and mailing to Ontario Long Term Care Clinicians, 1143 Wentworth St. West, Suite 202, Oshawa, ON L1J 8P7 OR,
5. Register by fax by completing the registration form and faxing to 1-905-404-3727.
6. Student registrations must also include proof of student status with their registration.

**SEE REGISTRATION PAGES FOR PAYMENT METHODS AND
THE CANCELLATION POLICY**

KEYNOTE SPEAKERS, HOT TOPICS, PANELS!

OPENING KEYNOTE SPEAKER—JOSHUA TEPPER, MD, FCFPC, MPH, MBA —SATURDAY OCTOBER 20



TOWARDS EXCELLENT CARE IN LONG-TERM CARE HOMES

By the end of the workshop our clinicians should be knowledgeable about quality health care delivery in LTC and on how to engage in quality improvement in LTC - this should be a great opportunity to reach a large number of LTC clinicians.

During this short talk there will an overview of key elements of a quality improvement (QI) agenda, highlight QI activities in Ontario's LTC sector and talk about potential future QI activities.

PLENARY SESSION—SUDIP SAHA, MD, MRCPed, FRCPC, CCST (UK) —SATURDAY OCTOBER 20

INCONTINENCE IN LTC

Learning Objectives:

1. Understand the implications of incontinence for frail older adults.
2. Differentiate between different types of incontinence.
3. Evaluate and manage incontinence.

PLENARY SESSION—NICK DANEMAN, MD, FRCPC, MSc—SATURDAY OCTOBER 20



ANTIMICROBIAL STEWARDSHIP IN LONG-TERM CARE

1. Discuss the challenges of optimizing antibiotic use in Long-Term Care.
2. Consider the burden of antibiotic misuse, harms and resistance in Long-Term Care.
3. Discuss an upcoming Audit-and-Feedback study to improve antibiotic Initiation and Duration in Long-Term Care.
4. Explore methods to decrease unnecessary antibiotic initiation in Long-Term Care.
5. Explore methods to decrease unnecessary antibiotic duration in Long-Term Care.

HOT TOPIC PANEL—SATURDAY OCTOBER 20



PRACTICAL APPROACHES TO CLINICAL COMPLEXITIES IN LONG-TERM CARE

Panel: Fred Mather, MD,; Evelyn Williams, MD; Sid Feldman, MD; Alexandra Papaioannou, PhD; Paul Katz, MD, CMD

Moderator: Robert Cooper, LLB, JD, MD, CCFP, FCFP, FASAM, DABAM

This Saturday panel will provide a forum to discuss practical insights into challenging clinical scenarios in Long-Term Care based on best practices and existing evidence. This is a great opportunity to interact with LTC and Geriatrics experts under a dynamic format and pose those questions you always wanted to ask.

PLENARY SPEAKER—MARK LOEB, MD, MSc, FRCPC SUNDAY OCTOBER 21



IMMUNIZATION IN LTC

This presentation will provide an update on immunization recommendations for residents and staff of long-term care facilities. Both the challenge of successful vaccination and the efficacy and safety of influenza, pneumococcal, and shingles vaccines in the long-term care population will be discussed along with the importance of herd immunity.

PANEL—THE PRESIDENT AND HIS FRIENDS - SUNDAY OCTOBER 21

Fred Mather, MD, CCFP; Nathan Herrmann, MD, FRCPC; Joanne Ho, MD, FRCPC, MSc; Paul Katz, MD, CMD

Our new Sunday panel format that will feature experts in LTC discussing about topics of high interest/ strategic importance for the Ontario Long Term Care Clinicians. The presentations will occur in a rapid fire/ TED talk format with approximately 10 -15 minutes allocated for a topic.

FRED MATHER—THE PRESIDENT—THE LONG-TERM CARE INQUIRY

Learning Objectives:

1. Review of the progress of the Long-Term Care Inquiry and Public Hearings.
2. Present the evidence and findings that are relevant to medical care in Long-Term care.

NATHAN HERRMANN: TREATING AGITATION AND AGGRESSION IN DEMENTIA: ARE CANNABINOIDS THE ANSWER?

Learning Objectives:

1. Understand why the use of cannabinoids in AD may be rational
2. Discuss current evidence and new research regarding cannabinoids use in BPSD.

JOANNE HO: GERIMEDRISK - A TELEMEDICINE CONSULTATION SERVICE

Learning Objectives:

1. Understand the GeriMedRisk experience so far.
2. Recognize how GeriMedRisk could complement the clinical work in LTC.

PAUL KATZ: MEDICAL EDUCATION IN LTC

Learning Objectives:

1. Understand the importance of trainees engagement in LTC.
2. Discuss an effective existing model of trainees engagement in LTC.

PLENARY SESSION—SHIRLEY LEE, MD, MHSc(Ed), CCFP (EM), FCFP, CMPA—SUNDAY OCTOBER 21



EFFECTIVE PATIENT-CENTRED COMMUNICATION: STRATEGIES FOR SUCCESS

This session will review strategies to communicate effectively with patients. By the end of this session, participants will identify:

1. Common situations related to challenging patient encounters.
2. Strategies to enhance your communication skills with patients (and families) to improve engagement.
3. Two communication tools to improve your patient interactions.

Registration Fees

MEMBER CONFERENCE FEES

NON MEMBER CONFERENCE FEES

MEDICAL RESIDENTS & STUDENTS CONFERENCE FEES

Full Package consists of your choice of 1 full day or 2 half day workshops Friday and then the Saturday & Sunday program

EARLY BIRD TO SEPTEMBER 16

| | |
|-----------------------------|--------|
| Full Package, 3 days | \$1150 |
| Saturday & Sunday | \$730 |
| One Day, Saturday or Sunday | \$395 |

TO OCTOBER 12

| | |
|-----------------------------|--------|
| Full Package, 3 days | \$1460 |
| Saturday & Sunday | \$865 |
| One Day, Saturday or Sunday | \$545 |

TO OCTOBER 12

| | |
|-----------------------------|-------|
| Full Package, 3 days | \$540 |
| Saturday & Sunday | \$345 |
| One Day, Saturday or Sunday | \$200 |

REGULAR FEES SEPT 17—OCT 12

| | |
|-----------------------------|--------|
| Full Package, 3 days | \$1360 |
| Saturday & Sunday | \$790 |
| One Day, Saturday or Sunday | \$455 |

ONSITE FEES OCT 13—OCT 21

| | |
|-----------------------------|--------|
| Full Package, 3 days | \$1600 |
| Saturday & Sunday | \$950 |
| One Day, Saturday or Sunday | \$610 |

ONSITE FEES OCT 13—21

| | |
|-----------------------------|-------|
| Full Package, 3 Days | \$670 |
| Saturday & Sunday | \$405 |
| One Day, Saturday or Sunday | \$350 |

ONSITE FEES OCT 13—OCT 21

| | |
|-----------------------------|--------|
| Full Package, 3 days | \$1500 |
| Saturday & Sunday | \$845 |
| One Day, Saturday or Sunday | \$555 |

NON MEMBER WORKSHOP FEES

If attending just the Friday program, or adding a workshop to your one or two day package.

WORKSHOP FEES, TO OCTOBER 12

| | |
|---|-------|
| Full Day Workshop | \$780 |
| Half Day Workshop | \$420 |
| Full Day IDEAS Workshop MainPro+ Accredited | \$480 |

STUDENT WORKSHOP FEES

If attending just the Friday program, or adding a workshop to your one or two day package.

WORKSHOP FEES, TO OCTOBER 12

| | |
|---|-------|
| Full Day Workshop | \$280 |
| Half Day Workshop | \$150 |
| Full Day IDEAS Workshop MainPro+ Accredited | \$180 |

MEMBER WORKSHOP FEES

If attending just the Friday program, or adding a workshop to your one or two day package.

EARLY BIRD WORKSHOP FEES, TO SEPTEMBER 16

| | |
|---|-------|
| Full Day Workshop | \$605 |
| Half Day Workshop | \$330 |
| Full Day IDEAS Workshop MainPro+ Accredited | \$400 |

ONSITE WORKSHOP FEES, OCT 13-OCT 19

| | |
|---|-------|
| Full Day Workshop | \$850 |
| Half Day Workshop | \$520 |
| Full Day IDEAS Workshop MainPro+ Accredited | \$600 |

ONSITE WORKSHOP FEES, OCT 13-OCT 19

| | |
|---|-------|
| Full Day Workshop | \$440 |
| Half Day Workshop | \$310 |
| Full Day IDEAS Workshop MainPro+ Accredited | \$300 |

REGULAR WORKSHOP FEES, TO OCTOBER 12

| | |
|---|-------|
| Full Day Workshop | \$680 |
| Half Day Workshop | \$360 |
| Full Day IDEAS Workshop MainPro+ Accredited | \$450 |

ON-SITE WORKSHOP FEES, OCT 13—19

| | |
|---|-------|
| Full Day Workshop | \$800 |
| Half Day Workshop | \$465 |
| Full Day IDEAS Workshop MainPro+ Accredited | \$550 |

OPENING RECEPTION

FRIDAY OCTOBER 19, 2018—4:15 PM—6:00 PM

Stop by for a complimentary drink and connect with your friends and colleagues!

Some interesting entertainment and light food will be available.



Location and Accommodations

Sheraton Centre Toronto Hotel

123 Queen Street West,
Toronto, Ontario M5H 2M9



Telephone: 1-888-627-7175—Be sure to request the **Ontario Long Term Care Clinicians room block** or code **OJ14AA**



Online: <https://www.starwoodmeeting.com/Book/OJ14AAOLTCC>

A block of rooms is being held at the Sheraton Centre Toronto until Monday **September 17, 2018**. The Ontario Long Term Care Clinicians and the Sheraton Centre Toronto cannot guarantee availability at any time. The applicable rate for a standard room for this event is **\$222.00 per night plus taxes**. All rooms are single or double occupancy and rates are available October 17th to October 21st, 2018.

Cancellation Clause: A deposit equal to one night's stay is required to hold each guest's reservation at the time of reservation. Full refund of this deposit will be given to cancellations received until 72 hours prior to arrival. For cancellations received within 72 hours of arrival, the deposit is non-refundable.

Check In: Check in time is 3:00 pm. Check out time is 12 noon.

Parking: Valet Parking and self-parking are available through the Sheraton Centre Toronto Hotel. The self-park lot is attached to the hotel, located under City Hall. Various parking is also available around the hotel including the Eaton Centre which is approximately 2 blocks from the Sheraton Centre Toronto Hotel.

About the Sheraton: The Sheraton Centre Toronto Hotel is located near all of Toronto's attractions and connected to the financial and entertainment districts by way of the PATH, a 16 mile underground network of shops and services. World-class dining, theatres, and museums are steps away.

Mobile App



Sponsored By:



The mobile app offers attendees a new user experience. The app will allow access to the agendas, as well as speakers and session descriptions. There will be an interactive map of the venue including the locations of all of the sessions and sponsor and exhibitor information. Attendees will be able to use the app for live polling, access surveys and even tweet their experience.

Espresso Café & Lounge



A lounge area will be set up for attendees take a break, have a coffee and have the opportunity to meet with colleagues and friends while attending the conference.

Attended Poster Session

The Attended Poster Session is scheduled for Saturday October 20th, 9:30 am to 10:30 am. Authors of the posters will be available for questions and queries about the posters on display. The posters will also be available for viewing on Saturday & Sunday. Posters will demonstrate a research project, best practice, current trend in Long-Term Care or relevant clinical cases.

General Information

BADGES

Once registered, please ensure you wear your badge for entrance to all sessions, meals and reception. Your badge must be visible and worn throughout the event in order to have access to the program.

CONCURRENT WORKSHOP CHOICES

When selecting your workshop choice, and it appears that your choice is not available, that indicates the choice you are making is full and not available.



Please move to another choice listed, which is still available.

The online system automatically removes the workshop from the selections once full. If registering by fax or email, the office will notify you directly by email if you have selected a workshop that is full and you will be given the option of others that are still open. Workshops are repeated twice.

PRESENTATIONS AVAILABLE THROUGH THE WEBSITE

Prior to the conference, all authorized presentations will be also be posted on the website and will be password protected for all of the conference attendees only. This will allow you to download what presentations you would like to have while at the conference.



REGISTRATION AT THE CONFERENCE

The OLTCC registration desk will be located on the Lower Concourse Level. Please register at the OLTCC registration desk to pick up your badge and conference material.



7:00 AM—6:00 PM

REGISTRATION OPEN

7:30 AM—9:00 AM

CONTINENTAL BREAKFAST

When choosing workshops for the day you have your choice of either one full day workshop or two half day workshops.

8:00 AM—4:15 PM

FULL DAY WORKSHOP—#101-18

Note: An online component is to be completed before attending this workshop. Also, please note earlier start time: 8:00 am.

Break: 10:30 am—10:45 am

Lunch: 12:00 pm—12:45 pm

Break: 2:30 pm—2:45 pm

IDEAS LTC PRACTITIONERS QUALITY
IMPROVEMENT

EVELYN WILLIAMS, MD, CCFP (COE), FCFP,
MHSc, CMD

BEN ROBERT, MD,CCFP (COE), (PC), MBA

CYNTHIA MAJEWSKI, BSCN, MA (C)

30.75 MAINPRO+ CREDITS

Learning Objectives:

1. To participate as a member of a Quality Improvement Team equipped with basic skills and knowledge.
2. Share a common language of health care improvement with others in order to support the transformation agenda of the province of Ontario.

8:00 AM—4:15 PM

FULL DAY WORKSHOP—#102-18

Note the Earlier Start time for this Workshop and Shorter Lunch

Break: 10:30 am—10:45 am

Lunch: 12:00 pm—12:45 pm

Break: 2:30 pm—2:45 pm

THE OLTCC LONG-TERM CARE
ATTENDING PRACTITIONER PRIMER

JULIE AUGER, MD, CCFP (COE), FCFP

LORAND KRISTOF, MD, MSc, CCFP (COE)

FRED MATHER, MD, CCFP

JOBIN VARUGHESE, MD, CMD, CCFP (COE)

21.75 MAINPRO+ CREDITS

Learning Objectives:

1. Understand the legislative requirements of Attending Physicians (AP) and Registered Nurses in the Extended Class [RN(EC)] working in Long-Term Care.
2. Recognize the Roles and Responsibilities of APs and RN(EC).
3. Recognize the interdisciplinary environment of care of patients in Long-Term Care.

8:45 AM—12:00 PM

HALF DAY WORKSHOP—#103-18

Break: 10:15 am—10:30 am

Lunch: 12:00 pm—1:00 pm

USING ANTIBIOTICS WISELY:
STRATEGIES TO REDUCE UNNECESSARY
ANTIBIOTICS FOR URINARY TRACT
INFECTIONS IN LONG-TERM CARE

ANDREA MOSER, MD, MSc, CCFP (COE), FCFP

JEROME LEIS, MD, MSc, FRCPC

Learning Objectives:

1. Discuss the role of Choosing Wisely Canada in antimicrobial stewardship
2. Discuss overview of the problem, aim of Using Antibiotics Wisely and known drivers of antibiotic prescribing for urinary tract infections in Long-Term care.
3. By the end of the session, participants will be able to have a better understanding of the evidence-based tools available and how best to optimize treatments and tests in long-term care.

8:45 AM—12:00 PM

Break: 10:15 am—10:30 am

Lunch: 12:00 pm—1:00 pm

HALF DAY WORKSHOP—#104-18

PALLIATIVE CARE IN LTC

LORAND KRISTOF, MD, MSc, CCFP (COE)

BEN ROBERT, MD,CCFP (COE), (PC), MBA

Learning Objectives:

1. Recognize patient who would benefit from a palliative approach in a LTC setting.
2. Understand disease trajectory and target intervention appropriately.
3. Manage common palliative symptoms in LTC setting.

8:45 AM—12:00 PM

Lunch: 12:00 pm—1:00 pm

Break: 2:30 pm—2:45 pm

HALF DAY WORKSHOP—#105-18

DIABETES MANAGEMENT IN LTC

AFSHAN ZAHEDI, BSc, MD, FRCPC

FREDA LEUNG, BSc PHM, RPH, BCGP, CDE, CRE

Learning Objectives:

1. Review the 2018 Diabetes Canada Guidelines: Diabetes in Elderly.
2. Discuss challenging cases encountered in long-term care setting: formulate management plans.
3. Review practical clinical tips for management of complex diabetes cases in frail elderly.

12:00 PM—1:00 PM

LUNCHEON

1:00 PM—4:15 PM

Break: 2:30 pm—2:45 pm

HALF DAY WORKSHOP—#106-18

MUSIC AND THE BRAIN IN LTC

CHELSEA MACKINNON, BHSc, MA, MMIE (C)

Learning Objectives:

1. Explain music's neurological pathways and their effects on the whole person.
2. Describe and determine musical interventions that can be applied to LTC residents living with PD, AD or stroke.
3. Share strategies for integrating music solutions into the daily routines of residents and staff members.

1:00 PM—4:15 PM

Break: 2:30 pm—2:45 pm

HALF DAY WORKSHOP—#107-18

DEPRESCRIBING IN LTC

SID FELDMAN, MD, CCFP (COE), FCFP, CMD

BARB FARRELL, BSCPHM, PHARM, FCSHP

Learning Objectives:

1. Identify opportunities for deprescribing.
2. Optimize "nightmare" medication list.
3. Effectively deprescribe high risk medications.

1:00 PM—4:15 PM

Break: 2:30 pm—2:45 pm

HALF DAY WORKSHOP—#108-18

BPSD

ANDREA MOSER, MD, MSc, CCFP (COE), FCFP

Learning Objectives:

1. Assess Behavioural and Psychologic Symptoms of Dementia in Long Term Care using standardized tools.
2. Apply non-pharmacologic behavioural management strategies for BPSD.
3. Utilize appropriate pharmacological options in managing BPSD.

4:15 PM—6:00 PM

WELCOME OPENING RECEPTION

Complimentary for all delegates and guests!

Stop by and reconnect with your colleagues and friends, while enjoying a complimentary cocktail, light food and entertainment!

6:30 AM—5:30 PM

REGISTRATION OPEN

6:30 AM—8:30 AM

BREAKFAST

7:00 AM—8:00 AM

SYMPOSIUM

8:00 AM—8:15 AM

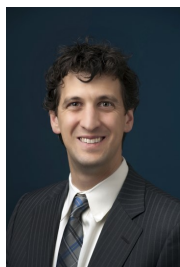
OPENING REMARKS & WELCOME

FRED MATHER, MD, CCFP
President, OLTCC

8:15 AM—8:45 AM

TOWARDS EXCELLENT CARE IN
LONG—TERM CARE HOMES

JOSHUA TEPPER, MD, FCFPC, MPH, MBA



By the end of the workshop our clinicians should be knowledgeable about quality health care delivery in LTC and on how to engage in quality improvement in LTC - this should be a great opportunity to reach a large number of LTC clinicians. During this short talk I will provide an overview of key elements of a quality improvement (QI) agenda, highlight QI activities in Ontario's LTC sector and talk about potential future QI activities.

Learning Objectives:

1. Quality Care/Excellent Care.
2. Quality Standards for some conditions in LTC.
3. Integration of quality standards in LTC practice.
4. Practice Reports.
5. LTC performance indicators.

8:45 AM—9:15 AM

INCONTINENCE IN LTC

SUDIP SAHA, MD, MRCPED, FRCPC, CCST
(UK)

Learning Objectives:

1. Understand the implications of incontinence for frail older adults.
2. Differentiate between different types of incontinence.
3. Evaluate and manage incontinence.

9:15 AM—9:30 AM

OLTCC ADVOCACY BRIEFING
REPORT

9:30 AM—10:30 AM



REFRESHMENT BREAK, ESPRESSO
CAFÉ & EXHIBITS

9:30 AM—10:30 AM

ATTENDED POSTER SESSION

10:30 AM—11:30 AM

ANTIBIOTIC STEWARDSHIP IN LTC

NICK DANEMAN, MD, FRCPC, MSc



Learning Objectives:

1. Examine the landscape of antibiotic utilization.
2. Assess barriers and opportunities for stewardship.
3. Identify appropriate antibiotic prescribing practices in LTC.

11:30 AM—12:00 PM

AWARD
PRESENTATIONS

Join us for the presentation of the OLTCC 2018 Long-Term Care Physician of the Year Award. The recipient will be announced at this presentation.



12:00 PM—1:00 PM

LUNCHEON, POSTERS, EXHIBITS AND
ESPRESSO CAFÉ

This luncheon is sponsored by:



1:00 PM—2:00 PM

PANEL DISCUSSION
PRACTICAL APPROACHES TO CLINICAL
COMPLEXITIES IN LTC

Moderator: ROBERT COOPER, LLB, JD, MD, CCFP, FCFP, FASAM, DABAM

Speakers: FRED MATHER, MD, CCFP

EVELYN WILLIAMS, MD, CCFP(COE), FCFP, MHSc, CMD

SID FELDMAN, MD, CCFP(COE), FCFP, CMD

ALEXANDRA PAPAIOANNOU, BScN, MD, MSc, FRCP (C), FACP

PAUL KATZ, MD, CMD

Learning Objectives:

1. Discuss best practices and available evidence in the care of the older adults in a LTC setting.
2. Provide a forum for discussing clinical updates in the care of the older adults in a LTC setting.

2:00 PM—3:00 PM

CONCURRENT WORKSHOPS

Select only one workshop from this time slot.

These workshops are repeated from 3:30 PM—4:30 PM

WORKSHOP #201-18 2:00 pm—3:00 pm

TIME MANAGEMENT FOR LONG-TERM CARE PHYSICIANS

JOHN CROSBY, MD

Learning Objectives:

1. Learn to have time for family meetings.
2. Learn to love paperwork.
3. Learn to have more time for patients and yourself.

WORKSHOP #202-18 2:00 pm—3:00 pm

CHANGING THE APPROACH TO TREATING HYPERTENSION IN THE
ELDERLY: SLOW DOWN OR SPRINT

ALLAN GRILL, MD, CCFP (COE), MPH, FCFP, CCPE

Learning Objectives:

1. To demonstrate the various methods used to properly diagnose patients with hypertension.
2. To identify which elderly patients should be considered for more aggressive blood pressure treatment targets.
3. To implement the KidneyWise clinical toolkit recommendations on HTN management for seniors in various primary care clinical settings (e.g. office, LTC, etc.).

DAY TWO

CONTINUED



WORKSHOP #203-18 2:00 pm—3:00 pm

This Workshop has been cancelled.

WORKSHOP #204-18 2:00 pm—3:00 pm

RESIDENT AND FAMILY CENTRED CARE: A VALUE SHIFT IN LONG-TERM CARE

ANDREA MOSER, MD, MSc, CCFP (COE), FCFP
PAULA TOHM, RN, BHScN

Learning Objectives:

1. Appreciate the core principles of a resident and family centered philosophy of care.
2. Identify strategies to shift the philosophy of care in PALTC.
3. Know what and how tools can support implementation.

WORKSHOP #205-18 2:00 pm—3:00 pm

DEMENTIA CARE TO INDIGENOUS PEOPLE—IMPLICATION IN PRIMARY/ LONG-TERM CARE

SARAH FUNNELL, MSc, MD, CCFP, FRCPC
OJISTOH HORN, CFPC, MD, MSc, BSc

Learning Objectives:

1. Gain understanding in epidemiology of dementia in Indigenous people in Canada.
2. Gain understanding of the experience of dementia and dementia-care for First Nations elders in Ontario through a case example of Akwesasne.
3. Discuss ways to improve dementia care for Indigenous people in Ontario.

WORKSHOP #206-18 2:00 pm—3:00 pm

FRACTURE PREVENTION: A NEW TOOL FOR FRACTURE RISK ASSESSMENT

ALEXANDRA PAPAIOANNOU, BScN, MD, MSc, FRCP (C), FACP
LYNN NASH, MD, CCFP, FCFP

Learning Objectives:

1. To recognize potential risk factors for fractures in older adults living in LTC.
2. To assess fracture risk using the Fracture Risk Scale, a new fracture risk tool.
3. To manage identified fracture risk in LTC residents.

WORKSHOP #207-18 2:00 pm—3:00 pm

TOP 10 ARTICLES

CHRISTOPHER PATTERSON, MD, FRCPC

Learning Objectives:

1. Examine new evidence on the care of frail older adults in LTC.
2. Recognize the relevance of the research to one's LTC practice.
3. Identify effective, targeted interventions from each article that could change one's practice.

WORKSHOP #208-18 2:00 pm—3:00 pm

FRAILTY IN LTC

CHRISTOPHER FRANK, MD, FCFP (COE)

Learning Objectives:

1. Understand the frailty landscape in LTC.
2. Identify tools for patient assessment and observation.
3. Propose care plans and interventions appropriately tailored to patients needs and trajectory.

3:00 PM—3:30 PM

REFRESHMENT BREAK, EXHIBITS, POSTERS & ESPRESSO CAFÉ

3:30 PM—4:30 PM

CONCURRENT WORKSHOPS REPEATED

Choose one workshop from this time slot.
See description of each listed above.

WORKSHOP #301-18 3:30 pm—4:30 pm

TIME MANAGEMENT FOR LONG-TERM CARE PHYSICIANS
JOHN CROSBY, MD



WORKSHOP #302-18 3:30 pm—4:30 pm

CHANGING THE APPROACH TO TREATING HYPERTENSION IN THE ELDERLY: SLOW DOWN OR SPRINT

ALLAN GRILL, MD, CCFP (COE), MPH, FCFP, CCPE

WORKSHOP #303-18 3:30 pm—4:30 pm

This Workshop has been cancelled.

WORKSHOP #304-18 3:30 pm—4:30 pm

RESIDENT AND FAMILY CENTRED CARE: A VALUE SHIFT IN LONG-TERM CARE

ANDREA MOSER, MD, MSc, CCFP (COE), FCFP
PAULA TOHM, RN, BHScN

WORKSHOP #305-18 3:30 pm—4:30 pm

DEMENTIA CARE TO INDIGENOUS PEOPLE—IMPLICATION IN PRIMARY/ LONG-TERM CARE

SARAH FUNNELL, MSc, MD, CCFP, FRCPC
OJISTOH HORN, CFPC, MD, MSc, BSc

WORKSHOP #306-18 3:30 pm—4:30 pm

FRACTURE PREVENTION: A NEW TOOL FOR FRACTURE RISK ASSESSMENT

ALEXANDRA PAPAIOANNOU, BScN, MD, MSc, FRCP (C), FACP
LYNN NASH, MD, CCFP, FCFP

SATURDAY OCTOBER 20, 2018

DAY TWO

CONTINUED



Ontario
Long Term Care
Clinicians

WORKSHOP #307-18 3:30 pm—4:30 pm

TOP 10 ARTICLES

CHRISTOPHER PATTERSON, MD, FRCPC

WORKSHOP #308-18 3:30 pm—4:30 pm

FRAILITY IN LTC

CHRISTOPHER FRANK, MD, FCFP(COE)



ANNUAL GENERAL MEETING

4:30 PM—5:00 PM

Members Only

**ONTARIO LONG TERM CARE
CLINICIANS ANNUAL GENERAL
MEETING**

5:00 PM—5:30 PM

Members Only

**ONTARIO LONG TERM CARE
PHYSICIANS ANNUAL GENERAL
MEETING**



SUNDAY OCTOBER 21, 2018

DAY THREE



Ontario
Long Term Care
Clinicians

7:00 AM—4:00 PM

REGISTRATION OPEN

7:00 —8:30 AM

BREAKFAST

8:15 AM—8:20 AM

OPENING REMARKS

LORAND KRISTOF, MD, MSc, CCFP (COE)
2018 Conference Chair

8:20 AM—8:30 AM

**ONTARIO MEDICAL ASSOCIATION
REPORT**

8:30 AM—8:45 AM

**ONTARIO LONG TERM CARE CLINICIANS
REPORT**

8:45 AM—9:45 AM



IMMUNIZATION IN LTC

MARK LOEB, MD, MSc, FRCPC

Learning Objectives:

1. Examine the immunization recommendations in LTC.
2. Differentiate effectively amongst new available vaccines and their indications.
3. Recognize importance of staff immunization.

9:45 AM—10:45 AM

CONCURRENT SESSIONS

Select only one workshop from this time slot.

These workshops are repeated from 11:30 AM—12:30 PM

WORKSHOP #401-18 9:45 am—10:45 am

FULL CODE OR DNR: AN APPROACH TO DISCUSSIONS ABOUT END-OF-LIFE DECISION MAKING

AMIT ARYA, MD, CCFP, FCFP

JOHN DAVEY, MD CCFP(PC)

Learning Objectives:

1. Develop an improved understanding of how patients with terminal illness understand CPR, and how television influences public perception of CPR outcomes.
2. Understand advanced CPR statistics, including how outcomes vary based on type of illness and functional status.
3. Understand cultural and community values, and how they may have a large impact on end-of-life decision making.

WORKSHOP #402-18 9:45 am—10:45 am

DE-PRESCRIBING AND MENTORING

JOEL BORDMAN, MD, DAIPM, DCAPM, FISAM

Learning Objectives:

1. To identify which drugs to deprescribe in older adults.
2. To apply evidence-based tools and deprescribing algorithms to successfully discontinue medications in the long-term care setting.
3. To effectively use communication techniques to engage patients, their families, and the entire healthcare team in the deprescribing process and the substitution of non-drug therapies.

DAY THREE

CONTINUED



WORKSHOP #403-18 9:45 am—10:45 am

SCABIES IN LONG-TERM CARE FACILITIES

DOUGLAS FAULDER, MD

Learning Objectives:

1. To understand the special aspects of Scabies infestations in long-term care residents.
2. To know the particular features of Scabies that facilitate earlier diagnosis.
3. To know the coordinated treatment approach that is required for the effective management of Scabies in long-term care facilities.

WORKSHOP #404-18 9:45 am—10:45 am

OPTIMIZING CARE: CODING AND BILLING IN LONG-TERM CARE

FRED MATHER, MD, CCFP

Learning Objectives:

1. Differentiate different billing methods available to Long-Term Care Physicians.
2. Reflect on how fees can be applied to optimize care.
3. Create recommendations to incentivize and reward Long-Term Care Physicians.

WORKSHOP #405-18 9:45 am—10:45 am

IMPROVING ACCESS TO TREATMENT “IN PLACE” IN LONG-TERM CARE: HOW ONTARIOS CONSENT FRAMEWORK SIMPLIFIES THE WHO, WHAT, WHEN, WHERE AND WHY OF CONSENT

JILL OLIVER, PhD

PAULA CHIDWICK, PhD

Learning Objectives:

1. The unique role long-term care physicians have in proposing treatment, evaluating capacity, and obtaining consent.
2. What to do if a resident is found incapable of making a consent-related decision and who you turn to next.
3. When the Office of the Public Guardian and Trustee can provide consent, and when they can't.
4. The PoET (Prevention of Error-based Transfers) Ethics Quality Improvement Project's tools, including the CONNECT POET APP: Connecting On-Call Physicians with Residents' Health Care Directives Using Prevention of Error-Based Transfers (PoET) App. This App can help physicians reveal and discuss resident's wishes values and beliefs and align treatment plan accordingly.

WORKSHOP #406-18 9:45 am—10:45 am

PRACTICING TO CHOOSE WISELY IN LTC

JOBIN VARUGHESE, MD, CMD, CCFP (COE)

ANDREA MOSER, MD, MSc, CCFP, FCFP(COE)

SID FELDMAN, MD, CCFP (COE), FCFP, CMD

Learning Objectives:

1. Provide evidence-based care to their Long-Term Care (LTC) residents by incorporating the Choosing Wisely recommendation.
2. Integrate the principles of resident and family-centered care into their approach to care.
3. Use Advanced Care Planning (ACP) and an early palliative approach to support residents and Substitute Decision Makers (SDMs) in decisions through the trajectory of life in LTC.

WORKSHOP #407-18 9:45 am—10:45 am

NEURO-BEHAVIOURAL PROGRAM: MANAGEMENT OF NEUROPSYCHIATRIC SYMPTOMS OF DEMENTIA IN LTC

SHEELAGH WILLET, MSN, ANP

ANGELESE TURNER, MScN, PMNP, AGNP-C

Learning Objectives:

1. To enhance understanding of the complexity and challenges in the care and management of Long-Term Care residents with behavioural and psychological symptoms of dementia.
2. To identify strategies for the optimal management of behavioural and psychological symptoms of dementia for seniors in Long-Term Care.
3. Neuro-behavioural Program design: components for success and lessons learned.

WORKSHOP #408-18 9:45 am—10:45 am

ORCHESTRATING MAID—OBSERVATIONS AND EXPERIENCES

KERSTIN MOSSMAN, MD, CCFP (COE), FCFP

LOUIS KENNEDY, MD

2 Care of the Elderly Physicians will discuss the history of MAID in Ontario/Canada, patient eligibility, assessment and care delivery. They will share key learning points from personal experiences providing this option of care to patients. Time for knowledge translation amongst attendees and presenters will be part of this workshop.

Learning Objectives:

1. Patient eligibility, assessment and care delivery.
2. Orchestrating MAID Care for patient and family.
3. Self care/debrief for providers.

10:45 AM—11:30 AM



REFRESHMENT BREAK, POSTERS, EXHIBITS & ESPRESSO CAFÉ

11:30 AM—12:30 PM

CONCURRENT SESSIONS
REPEATED

Choose one workshop from this time slot.
See description of each listed above.

WORKSHOP #501-18 11:30 am—12:30 pm

FULL CODE OR DNR: AN APPROACH TO DISCUSSIONS ABOUT END-OF-LIFE DECISION MAKING

AMIT ARYA, MD, CCFP, FCFP

JOHN DAVEY, MD CCFP(PC)

WORKSHOP #502-18 11:30 am—12:30 pm

DE-PRESCRIBING AND MENTORING

JOEL BORDMAN, MD, DAIPM, DCAPM, FISAM.

WORKSHOP #503-18 11:30 am—12:30 pm

SCABIES IN LONG-TERM CARE FACILITIES

DOUGLAS FAULDER, MD

SUNDAY OCTOBER 21, 2018

DAY THREE

CONTINUED



WORKSHOP #504-18 11:30 am—12:30 pm

OPTIMIZING CARE: CODING AND BILLING IN LONG-TERM CARE

FRED MATHER, MD, CCFP

WORKSHOP #505-18 11:30 am—12:30 pm

IMPROVING ACCESS TO TREATMENT “IN PLACE” IN LONG-TERM CARE: HOW ONTARIO'S CONSENT FRAMEWORK SIMPLIFIES THE WHO, WHAT, WHEN, WHERE AND WHY OF CONSENT

JILL OLIVER, PhD

PAULA CHIDWICK, PhD

WORKSHOP #506-18 11:30 am—12:30 pm

PRACTICING TO CHOOSE WISELY IN LONG-TERM CARE

JOBIN VARUGHESE, MD, CMD, CCFP (COE)

ANDREA MOSER, MD, MSc, CCFP, FCFP(COE)

SID FELDMAN, MD, CCFP (COE), FCFP, CMD

WORKSHOP #507-18 11:30 am—12:30 pm

NEURO-BEHAVIOURAL PROGRAM: MANAGEMENT OF NEUROPSYCHIATRIC SYMPTOMS OF DEMENTIA IN LONG-TERM CARE

SHEELAGH WILLET, MSN, ANP

FOZIA JOHRI, MScN, NP-PHC, GNC(C), FNP-BC

WORKSHOP #508-18 11:30 am—12:30 pm

ORCHESTRATING MAID—OBSERVATIONS & EXPERIENCES

KERSTIN MOSSMAN, MD, CCFP (COE), FCFP

LOUIS KENNEDY, MD

12:30 PM—1:30 PM



LUNCHEON, POSTERS, EXHIBITS & EXPRESSO CAFÉ

12:30 PM—1:30 PM

Invited Guests Only

MEDICAL DIRECTOR COURSE PARTICIPANTS LUNCHEON



1:30 PM—2:30 PM



PANEL DISCUSSION

THE PRESIDENT AND HIS FRIENDS

FRED MATHER, MD, CCFP

NATHAN HERRMANN, MD, FRCPC

JOANNE HO, MD, FRCPC, MSc

PAUL KATZ, MD, CMD

Fred Mather—The President—The Long-Term Care Inquiry

Learning Objectives

1. Review of the progress of the Long-Term Care Inquiry and Public Hearings.
2. Present the evidence and findings that are relevant to medical care in Long-Term Care.

Nathan Herman: Treating Agitation and Aggression in Dementia: Are Cannabinoids the Answer?

Learning Objectives:

1. Understand why the use of cannabinoids in AD may be rational.
2. Discuss current evidence and new research regarding cannabinoids use in BPSD.

Joanne Ho: GeriMedRisk - A Telemedicine Consultation Service

Learning Objectives:

1. Understand the GeriMedRisk experience so far.
2. Recognize how GeriMedRisk could complement the clinical work in Long-Term Care.

Paul Katz: Medical Education in Long-Term Care

Learning Objectives:

1. Understand the importance of trainees engagement in Long-Term Care.
2. Discuss an effective existing model of trainees engagement in Long-Term Care.

2:30 PM—3:15 PM



EFFECTIVE PATIENT-CENTRED COMMUNICATION: STRATEGIES FOR SUCCESS

SHIRLEY LEE, MD, MHSc(Ed), CCFP(EM), FCFP, CMPA

This session will review strategies to communicate effectively with patients.

By the end of this session, participants will

identify: 1 - Common situations related to challenging patient encounters, 2 - Strategies to enhance your communication skills with patients (and families) to improve engagement, 3 - Two communication tools to improve your patient interactions.

Learning Objectives:

1. Describe communication issues that can result in medical-legal risk
2. Review effective communication strategies to use in difficult patient encounters.
3. Identify 2 structured communication tools that can improve patient engagement and help manage expectations.
4. Commit to implementing one new communication strategy or tool to improve practice.

3:15 PM

CONFERENCE ENDS

Faculty, 2018

AMIT ARYA, MD, CCFP, FCFP

Palliative Care Physician, Division of Supportive & Palliative Care, William Osler Health System Lecturer, Division of Palliative Care, Department of Family & Community Medicine, University of Toronto Assistant Clinical Professor, Division of Palliative Care, Faculty of Health Sciences, McMaster University.

JULIE AUGER, MD, CCFP (COE), FCFP

Dr. Julie Auger is a family physician with a focused practice in the care of the elderly in Timmins. She is the Medical Director and an Attending Physician in a LTC home. She is an Assistant Professor with the Northern Ontario School of Medicine.

JOEL BORDMAN, MD, DAIPM, DCAPM, FISAM

Dr. Bordman is a mentor to other doctors as part of the OCFP mentorship program (MMAP). He has credentials in addiction and pain medicine. He has experience in family practice, emergency medicine, Palliative care and Long-Term Care.

PAULA CHIDWICK, PhD

Dr. Paula Chidwick, Director Research & Corporate Ethics at William Osler Health System and founding member of Osler's Ethics Quality Improvement Lab was the first full-time Ethicist to be hired at a community hospital. She is an expert on ethics quality improvement, ethics in transitions, end-of-life and advance care planning.

ROBERT COOPER, LLB, JD, MD, CCFP, FCFP, FASAM, DABAM

Dr. Rob Cooper graduated from Osgoode Hall Law School and the University of Toronto Medical School. He completed a family practice residency at the University of Toronto. He is a Councilor for the Canadian Medical Protective Association and Chair of the OMA section for Addiction Medicine. Dr. Rob Cooper is on the Board of Directors of the OLTCC.

JOHN CROSBY, MD

Dr. Crosby was born in Sarnia. A professorship at three universities, FRCP (EM) for 20 years and has been a family physician for 25. He is medical director of 2 LTC's in Cambridge, author of a worldwide best seller on Time management, supervisor for the CPSO and a Medical Post Blogger.

NICK DANEMAN MD, FRCPC, MSc

Dr. Nick Daneman is a CIHR supported clinician scientist in the division of infectious diseases at Sunnybrook Health Sciences Centre, at the University of Toronto, and is an adjunct scientist at the Institute for Clinical Evaluative Sciences and Public Health Ontario. Using hospital, clinical, and population-based data sources, his research aims to maximize the benefits and minimize the harms of antibiotic treatments.

JOHN DAVEY, MD CCFP(PC)

Dr. Davey is a palliative care physician at William Osler Health System and practices in the inpatient, outpatient and community settings. He is an Assistant Professor in the Department of Family Medicine at McMaster University and is active in teaching palliative care trainees from the pre-clerkship to fellowship level.

BARB FARRELL, BSCPHM, PHARMD, FCSHP

Dr. Barbara Farrell is a Scientist with the Bruyère Research Institute, Assistant Professor with the Department of Family Medicine, University of Ottawa and Adjunct Assistant Professor with the School of Pharmacy, University of Waterloo. She is a clinical pharmacist in the Bruyère Geriatric Day Hospital and leads the Ontario Deprescribing Guidelines research program.

DOUGLAS FAULDER, MD

Dr. Faulder has practiced primary care in Edmonton since 1980, and had a community practice in north Edmonton from 1980 to 2006. Since 2006 he has combined clinical work in Long-term Care and Post-acute Care with Medical Direction; first at CapitalCare, the publically owned Long-Term Care operator in Edmonton; then as Medical Director for Continuing Care in the Edmonton Zone of Alberta Health Services.

SID FELDMAN, MD, CCFP (COE), FCFP, CMD

Dr. Sid Feldman is the Executive Medical Director Residential Program and Chief Department of Family and Community Medicine, Baycrest Health Sciences. He is an Associate Professor, University of Toronto and is the Chair of the Health Care of the Elderly Committee of the College of Family Physicians of Canada.

CHRISTOPHER FRANK, MD, FCFP(COE)

Dr. Frank completed family medicine training at Queen's University and is Professor in Department of Medicine at Queen's. He works at Providence Care in Kingston doing geriatric rehabilitation and consultations, and palliative care.

SARAH FUNNELL, MSc, MD, CCFP, FRCPC

Sarah Brascoupé Funnell is a Family Physician who has also specialized in Public Health and Preventive Medicine. She is of Algonquin and Tuscarora ancestry. She currently works and resides in her traditional Algonquin territory of Ottawa. Her area of research is end-of-life care. She is also a mother to 3 daughters.

ALLAN GRILL, MD, CCFP (COE), MPH, FCFP, CCPE

Dr. Allan Grill is an Assistant Professor in the Department of Family & Community Medicine at the University of Toronto and Lead Physician at the Markham Family Health Team. His role as the Ontario Renal Network Provincial Primary Care Lead focuses on innovative ways to improve Chronic Kidney Disease management.

NATHAN HERRMANN, MD, FRCPC

Dr. Herrmann is the Richard Lewar Chair in Geriatric Psychiatry at Sunnybrook Health Sciences Centre and the University of Toronto. He is a Professor of Psychiatry in the Faculty of Medicine at the University of Toronto. He is Head of the Division of Geriatric Psychiatry at Sunnybrook Health Sciences Centre, co-director of the Clinical Neuropharmacology Laboratory, and a scientist in the Hurvitz Brain Sciences Research Program and the Center for Stroke Recovery.

Faculty, 2018

JOANNE HO, MD, FRCPC, MSc

Joanne Ho is an internist, geriatrician and clinical pharmacologist. She is currently an examiner with the Royal College of Physicians and Surgeons of Canada, Assistant Professor in the Department of Medicine, Division of Geriatric Medicine at McMaster University Waterloo Regional Campus and started GeriMedRisk, a geriatric clinical pharmacology and psychiatry consultation service in Ontario.

OJISTOH HORN, CFPC, MD, MSc, BSc

Ojistoh Kahnawahere Horn is a Haudenosaunee (Mohawk) family physician that has been working in Kahnawake and Akwesasne since 2009. During this time she has been teaching family medicine residents and medical students from McGill Medicine. Her concentrations have been prenatal, obstetric, hospitalist, and geriatric Long-Term care.

FOZIA JOHRI, MScN, NP-PHC, GNC(C), FNP-BC

Fazia Johri, is a NeuroBehavioural Nurse Practitioner working on improving the quality of life for patients with Behavioural and Psychological Symptoms of Dementia throughout the Central West LHIN. Partnered with Behavioural Support Ontario, escalating behaviours are addressed, and critical incidents along with Emergency Department visits are decreased.

PAUL KATZ, MD, CMD

Dr. Katz is currently the Chair of the Department of Geriatrics at the College of Medicine at Florida State University having previously served as Vice President of Medical Services at the Baycrest Health Centre In Toronto, Dr Katz's research has focused on the role of the physician in the post-acute and Long-Term care setting.

LOUIS KENNEDY, MD

Medical Director and Attending Physician, Arbour Heights LTC. Psycho-geriatrics and Rehab Medicine hospitalist, Providence Care Hospital. Together we are fostering OLTC's leadership role in CME and QI for Ontario's LTC clinicians.

LORAND KRISTOF, MD, MSc, CCFP (COE)

Dr. Lorand Kristof is a Family Physician trained in both Family Medicine and Geriatrics with a special interest in the primary care of older adults. He also provides palliative care to frail older adults in their home and in LTC. He is an OLTC Board Member and faculty in OLTC's Medical Curriculum Committee. He is the Conference Chair for the OLTC's Annual Conference "Practical Pearls in Long Term Care".

SHIRLEY LEE, MD, MHSc(Ed), CCFP(EM), FCFP

Shirley Lee completed her family and emergency medicine training at the University of Ottawa, followed by her Masters in Education at the University of Toronto. For over 20 years, she has been involved in many capacities from undergraduate to faculty development roles to enhance physician learning.

JEROME LEIS, MD, MSc, FRCPC

Dr. Leis' is the physician lead of antimicrobial stewardship and medical director of infection prevention and control and assistant professor at the University of Toronto. He has contributed to Choosing Wisely Canada and is currently the physician lead of Using Antibiotics Wisely campaign.

FREDA LEUNG, BSc PHM, RPH, BCGP, CDE, CRE

Freda Leung, a graduate from University of Toronto, Faculty of Pharmacy is a clinical pharmacist at The Scarborough Rouge Hospital and an independent consultant with special interest in diabetes and medication management in the geriatric population. Her consultation service to improve glycemic management is well sought after by many long term care homes across the country since 2005.

MARK LOEB, MD, MSc, FRCPC

Dr. Loeb is a Professor in the Departments of Pathology and Molecular Medicine and Clinical Epidemiology and Biostatistics. He holds the Michael G DeGroote Chair in Infectious Diseases Research and is Division Director for Infectious Diseases at McMaster. Dr. Loeb has led clinical trials on pneumonia and urinary tract infections in residents of long-term care facilities.

CHELSEA MACKINNON, BHSc, MA, MMIE (C)

Chelsea works diligently to incorporate music into traditional healthcare settings and inspires others to join her on this journey. As the research lead at the Room 217 Foundation, she gathers evidence to show music's effectiveness as a therapeutic tool. Chelsea is also a sessional instructor at McMaster University.

CYNTHIA MAJEWSKI, BScN, MA (C)

Cynthia has led the curricula development of the IDEAS Foundations Program since 2014. She held the position of Executive Director of the Quality Healthcare Network, a membership network from 1995 until her retirement in 2013. In 2005 as a co-founder of Safer Healthcare Now! she led the Ontario Campaign until 2011. In 2010, she acted as Director, Residents First a provincial Long-Term Care quality initiative.

FRED MATHER, MD, CCFP

Dr. Fred Mather is a President of OLTC. He is Medical Director at Sunnyside Home, Region of Waterloo. Current activities include representing OLTC at the Long Term Care Public Inquiry. He believes that OLTC the physicians voice to the public, government and stakeholders in Long-Term Care.

CAITLIN MCARTHUR, MScPT, PhD

Caitlin is a registered physiotherapist and postdoctoral fellow at the GERAS Centre for Aging Research at McMaster University. Caitlin is an expert in bone health and exercise, and her research focuses on improving rehabilitation in long-term care. Caitlin's has a PhD in Kinesiology, with a specialization in Aging, Health and Well-Being.

ANDREA MOSER, MD, MSc, CCFP (COE), FCFP

Dr. Andrea Moser is a family physician with a focus practice in care of the elderly, Associate Medical Director, Apotex Nursing Home at Baycrest, Assistant Professor in the DFCM, University of Toronto, the Toronto Central LHIN Regional Quality Table Lead and past president of Ontario Long Term Care Physicians.

KERSTIN MOSSMAN, MD, CCFP (COE), FCFP

Dr. Kerstin Mossman completed her Fellowship in Care of the Elderly at McMaster University in Hamilton, Ontario in 2005. Dr. Mossman currently works as a staff physician for seniors at the Barrie Community Health Centre. Well known for her commitment to and innovation in the treatment of the elderly, she provides consultations for the Aging Well Clinic, a joint initiative of the Barrie Community FHT and the Barrie CHC.

LYNN NASH, MD, CCFP, FCFP

Dr. Lynn Nash is a family physician in Ancaster, Ontario who has been practicing full spectrum family medicine for 37 years. She is an Associate Clinical Professor in the Department of Family Medicine, McMaster University and is a member of the Scientific Advisory Council for Osteoporosis Canada. Dr. Nash leads CME workshops on osteoporosis and falls prevention for the Ontario College of Family Physicians.

JILL OLIVER, PHD

Jill Oliver is William Osler Health System's Community Ethicist. Jill has a PhD in Philosophy (University of Waterloo), and a Fellowship in Clinical and Organizational Ethics (University of Toronto's Joint Centre for Bioethics). Jill consults to LTC residents, family, staff, and physicians, and also leads collaborative Ethics Quality Improvement Projects.

ALEXANDRA PAPAIOANNOU, BSCN, MD, MSC, FRCP (C), FACP

Dr. Alexandra Papaioannou is a Professor of Medicine at McMaster University. She is Executive Director of the GERAS Centre. She is author of more than 300 publications with a focus on frailty, falls and fractures. She is the project lead for the Ontario Osteoporosis Strategy for Fracture Prevention in LTC.

CHRISTOPHER PATTERSON, MD, FRCPC

Dr. Christopher Patterson worked a general practitioner in Northern Ontario before specializing in Internal and Geriatric Medicine. After fellowships in Boston and London he joined McMaster University in 1982. He practices at Hamilton Health Sciences, and visits clinics and nursing homes in the Hamilton area, Niagara Peninsular and Northern Ontario.

BEN ROBERT, MD, CCFP, COE(PC), MBA

Benoît Robert has worked in long-term care since 1994 and is the medical director at the PRVHC and for the Dementia program at the Glebe Centre. Through the leader route, he received certification for CoE and PC. He chairs the Ottawa Medical Directors' Forum and is a OLTCC Board Member.

SUDIP SAHA, MD, MRCPED, FRCPC, CCST (UK)

Dr. Sudip Saha is a British trained Consultant in Geriatrics and Gerontology. He is currently the Division Chief and Medical Director of the Seniors Health System at William Osler. His sub specialty interests include Dementia, BPSD, Parkinson's disease and Continence in the elderly. He shares a passion for and has extensive experience in looking after the frail elderly.

JOSHUA TEPPER, MD, FCFPC, MPH, MBA

Dr. Joshua Tepper is a family physician and the President and CEO of Health Quality Ontario. Previously, Joshua was a Vice President at Sunnybrook Health Sciences Centre, Assistant Deputy Minister of the Ministry of Health and Long-Term Care, and a research consultant for the Canadian Institute of Health Information.

PAULA TOHM, RN, BHScN

Paula, a Registered Nurse with 25 years of clinical and administrative experience; well versed in Patient- and Family-Centered Care, Quality, Patient Safety, Patient Experience, Risk Management, and currently Client Relations & Experience Officer at Baycrest. A member of the Patient Relations Advisory Group for Health Quality Ontario. Paula has spoken on numerous topics most recently with DD Law Cove Academy; Managing Conflict in Healthcare.

ANGELESE TURNER, MSCN, PMNP, AGNP-C

Angelese Turner holds a Post-Master Nurse Practitioner degree from the University of Toronto and practices as Neuro-behavioural Nurse Practitioner partnering with behavioural support champions supporting Central West LHIN LTC homes. She specializes in the management of neuropsychiatric symptoms of dementia aimed at enhancing the quality of life of residents.

JOBIN VARUGHESE, MD, CMD, CCFP (COE)

Jobin Varughese is a comprehensive family physician and works as medical director of Faith Manor and is an attending physician at Faith and Grace Manor with Holland Christian homes. He has previously served on the boards of OLTCP & OLTCC and continues to be part of the team involved with the Medical Director Curriculum. He is currently the vice-chair for the OMA Section of LTC/COE.

SHEELAGH WILLET, MSN, ANP

Sheelagh Nurse Practitioner for almost fifteen years, with a focus in geriatrics. Sheelagh is part of the William Osler Nurse Led Outreach Team. Most recently she completed a research study related to the development of a clinical process for the management of behavioral and psychological symptoms of dementia in the long term care setting funded by Spark (CCABI).

EVELYN WILLIAMS, MD, CCFP (COE), FCFP, MHSC, CMD

Evelyn Williams, MD, CCFP(COE), FCFP, MHSc, CMD is past president of OLTCC and Medical Coordinator for the City of Toronto LTC Homes and Services. She is an assistant professor in the Department of Family and Community Medicine, University of Toronto, and Head of the Division of LTC at Sunnybrook Veterans Centre. She is also co-author of the OLTCC Medical Directors Curriculum.

AFSHAN ZAHEDI, BSc, MD, FRCPC

After completing a degree in Biomedical Engineering, Dr. Zahedi graduated from University of Toronto, Faculty of Medicine and completed internal medicine residency and endocrinology fellowship at University of Toronto. Currently, she is an Associate Professor of Medicine at University of Toronto, and Medical Director of the Thyroid program at Women's College Hospital.

THANK YOU FOR REGISTERING FOR THE 2018 CONFERENCE. PLEASE **COMPLETE BOTH PAGES OF THE REGISTRATION FORM** IN FULL AND READ AND ACCEPT THE CANCELLATION CLAUSE. IF YOU HAVE ANY QUESTIONS, PLEASE CONTACT THE OFFICE AT office@oltcc.ca OR 905-404-9545.

Cancellation Policy

Cancellations received prior to **SEPTEMBER 22, 2018** are subject to a **\$60.00 administration fee**. After September 22, 2018 there will be no refunds however delegate substitution can be made until **FRIDAY OCTOBER 6, 2018 with no substitution fee**. From **SATURDAY OCTOBER 7, 2018** a \$60.00 delegate substitution fee applies.

I HAVE READ AND ACCEPTED THE CANCELLATION CLAUSE: ☐ YES

Registration 3 Ways—STUDENTS: Proof of student status must accompany your registration—by email (office@oltcc.ca or fax 1-905-404-3727)

@ Online: <https://eis.eventsair.com/oltcc/oltconference2018> — Quick & easy and only by credit card

✉ Mail: 1143 Wentworth Street W. Suite 202, Oshawa, ON L1J 8P7

☎ Fax: 1-905-404-3727—Complete the registration form and fax to number provided. Sessions will **not be confirmed** until payment is received and processed.

Membership

If you are a current OLTCC member, please choose the member rates on page 17. If you are not a member, please choose the non-member rates. If you want to join now and take advantage of the member rates, check the appropriate box under this section or go to www.oltcc.ca and join.

☐ I am a current OLTCC member ☐ I am not a member and will choose the non-member rates ☐ I will be joining now

Delegate Registration

One form per person. Photocopies are accepted.

Status: Choose one: ☐ Medical Director ☐ Physician ☐ Pharmacist ☐ Nurse Practitioner ☐ Medical Resident ☐ Other _____

Please circle one: Dr. Mr. Mrs. Ms.

First Name: _____ Last Name: _____

Long Term Care Facility Name: _____

Address: _____

City: _____ Province: _____ Postal Code: _____

Email: (please print clearly) _____

Tel: _____ Fax: _____

Dietary, Allergies or Other Special Considerations

If requesting Kosher or other special meals which must be brought in from outside the facility, there will be a 'upcharge' to cover additional cost including the cost of delivery.

List here: _____

Concurrent Workshop Selection

Concurrent workshops must be chosen with registration. If you do not choose your workshops there is no guarantee that your choice will be available onsite due to room capacities. Friday Workshops are to be chosen if you have registered for Friday, registered for the Full Conference Package, or registered for any Two Days, one being Friday.

Choose either one full day or two half day workshops (1 in am & 1 in pm)

FRIDAY OCTOBER 19

- ☐ 8:00 AM—4:15 PM: Full Day Workshop #101 (Accredited)
- ☐ 8:00 AM—4:15 PM: Full Day Workshop #102 (Physician Primer)
- ☐ 8:45 AM—12:00 PM: Half Day Workshop #103
- ☐ 8:45 AM—12:00 PM: Half Day Workshop #104
- ☐ 8:45 AM—12:00 PM: Half Day Workshop #105
- ☐ 1:00 PM—4:15 PM: Half Day Workshop #106
- ☐ 1:00 PM—4:15 PM: Half Day Workshop #107
- ☐ 1:00 PM—4:15 PM: Half Day Workshop #108

SATURDAY OCTOBER 20

Please choose **one** per time slot: Circle your choices

2:00 PM: 201 202 NA 204 205 206 207 208

3:30 PM: 301 302 303 304 305 306 307 308

SUNDAY OCTOBER 21

Please choose **one** per time slot: Circle your choices

9:45 AM: 401 402 403 404 405 406 407 408

11:30 AM: 501 502 503 504 505 506 507 508



Please provide your name on this page in order to keep your registration information together.

First Name _____ Last Name: _____

Choosing Your Registration Fees CIRCLE YOUR CHOICES AND TOTAL

Registration fees are categorized by member fees, non-member fees, and medical resident/student fees. (see info on student fees below). Members fees include all categories of membership—Regular, Pharmacists and Nurse Practitioners. **Early Bird Fee Is Applicable to Members Only:** Choose early bird member fees if registering before and including **September 16 and only if you are a member**. **Regular Fee Member:** Choose regular member fees if registering between **September 17 and October 12**, inclusive. **Non-members or Medical Residents/Students:** Choose regular fees to **October 12**. **Late & Onsite Fees:** Choose late & onsite fees if registering from **October 13 to October 21**. **If you are not a member, and want to join now for member fees, please choose this option under Fee Totals.**

| MEMBER EARLY BIRD FEES BEST VALUE! | 3 DAY PACKAGE Oct 19—Oct 21 | TWO DAYS Sat & Sun Oct 20, & Oct 21 | ONE DAY Sat or Sun Oct 20 or 21 | WORKSHOP FEES FULL DAY Friday Oct 19 | WORKSHOP FEES HALF DAY Friday Oct 19 | WORKSHOP FEES FULL DAY— IDEAS MAINPRO+ Friday Oct 19 |
|--|--------------------------------|---|---------------------------------------|---|---|---|
| MEMBER EARLY BIRD FEES To Sept 16 | \$1150 | \$730 | \$395 | \$605 | \$330 | \$400 |
| MEMBER REGULAR FEES From Sept 17—Oct 12 | \$1360 | \$790 | \$455 | \$680 | \$360 | \$450 |
| MEMBER LATE & ONSITE FEES From Oct 13—Oct 21 | \$1500 | \$845 | \$555 | \$800 | \$465 | \$550 |
| NON-MEMBER REGULAR FEES To Oct 12 | \$1460 | \$865 | \$545 | \$780 | \$420 | \$480 |
| NON-MEMBER ONSITE FEES From Oct 13—Oct 21 | \$1600 | \$950 | \$610 | \$850 | \$520 | \$600 |
| MEDICAL RESIDENTS & STUDENT REGULAR FEES (Proof of Residency & Student Status Required) To October 12 | \$540 | \$345 | \$200 | \$280 | \$150 | \$180 |
| MEDICAL RESIDENTS & STUDENT ONSITE FEES (Proof of Residency & Student Status Required) Oct 13—Oct 21 | \$670 | \$405 | \$350 | \$440 | \$310 | \$300 |

Sign Up For
The Early
Bird Today
& Enjoy
Discounted
Fees!

WHO IS A STUDENT? Postgraduate trainee in Faculty of Medicine or Pharmacy. Other students may be considered on an individual basis.
Please contact the office at 905-404-9545

Fee Totals

I am choosing: ☐ 3 DAY PACKAGE ☐ 2 DAYS, SAT & SUN ☐ 1 DAY, ☐ SAT OR ☐ SUN ☐ FRIDAY AM HALF DAY ☐ FRIDAY PM HALF DAY ☐ FRIDAY FULL DAY

Registration fees as selected\$ _____

OLTCC Membership Fee, Physician, \$275.00 (one year) or \$500.00 (two years) - **Join or Renew Now** \$ _____

OLTCC Membership Fee, (NP, PHARM, PA), \$225.00 (one year) or \$400.00 (two years) - **Join or Renew Now**\$ _____

SUB TOTAL FEES:\$ _____

HST—13% (HST# 783327893RT0001)\$ _____

TOTAL PAYMENT:\$ _____

Payment

By credit card: **FAX TO 1-905-404-3727**: VISA _____ MASTERCARD _____ AMEX _____

Credit card payments will be processed by Events In Sync, Inc. and your statement will show Events In Sync as the vendor. Events In Sync, Inc. is the managing company for the OLTCC.

NAME ON CARD: _____

NUMBER: _____ EXPIRY _____ CVN _____

SIGNATURE: _____

By Mail: With cheque payable to: **Ontario Long Term Care Clinicians**, 1143 Wentworth Street West, Suite 202, Oshawa, ON L1J 8P7

Questions? OLTCC Office: T: 905-404-9545; office@oltcc.ca



SPONSORS, 2018 *(At the time of print)*



MOBILE APP
RESPONSIVE GROUP INC.
<https://www.responsivegroup.ca>



DELEGATE BAGS
REXALL HEALTH SOLUTIONS
<https://www.rexall.ca/rexallhealthsolutions>



LUNCHEON SATURDAY OCTOBER 20
MEDICAL PHARMACIES
<https://www.medicalpharmacies.com>



SATURDAY AM SYMPOSIUM
AMGEN
<https://www.amgen.com>

EXHIBITORS, 2018 *(At the time of print)*

| | |
|-----------------------------------|----------|
| Abbott | 207 |
| Allergan | 306 |
| Amgen Canada | 200, 204 |
| Aphria | 400, 402 |
| Bayer Inc. | 408 |
| Bristol-Myers Squibb Canada | 302 |
| Classic Care Pharmacy | 205 |
| GERAS Centre | 203 |
| GSK | 209 |
| Health Quality Ontario | 102 |
| Hoffmann-La Roche Limited | 103 |
| Hospice Palliative Care Ontario | 106 |
| Medical Pharmacies Group Limited | 201 |
| Medreleaf | 101 |
| Ontario Long Term Care Clinicians | 501 |
| Ontario Long Term Care Physicians | 502 |
| Ontario Woundcare Interest Group | 207 |
| PointClickCare | 208 |
| Project ECHO—ECHO Ontario | 210 |
| Rexall Health Solutions | 109 |
| Sanofi Pasteur Limited | 308 |
| Think Research | 104 |
| Tweed & Spectrum Cannabis | 300 |
| UCB Canada | 100 |
| WeedMD | 105 |

www.alere.ca/ www.ca.abbott

www.allergan.com

www.amgen.com

www.aphria.ca

www.bayer.ca

www.bms.com

www.classiccare.ca

www.gerascentre.com

www.glaxosmithkline.com

www.hqontario.ca

www.rochecanada.com

www.hpc.co

www.medicalpharmacies.com

www.medreleaf.com

www.oltcc.ca

www.oltcp.ca

www.ontwig.com

www.pointclickcare.com

www.echoontario.ca

www.rexall.ca/rexallhealthsolutions

www.sanofipasteur.ca

www.thinkresearch.com

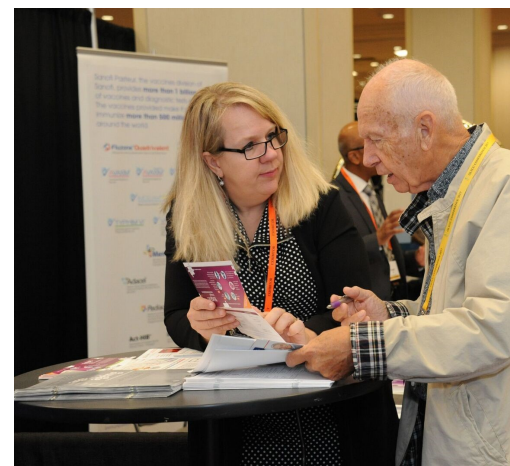
www.spectrumcannabis.com

www.ucb.com

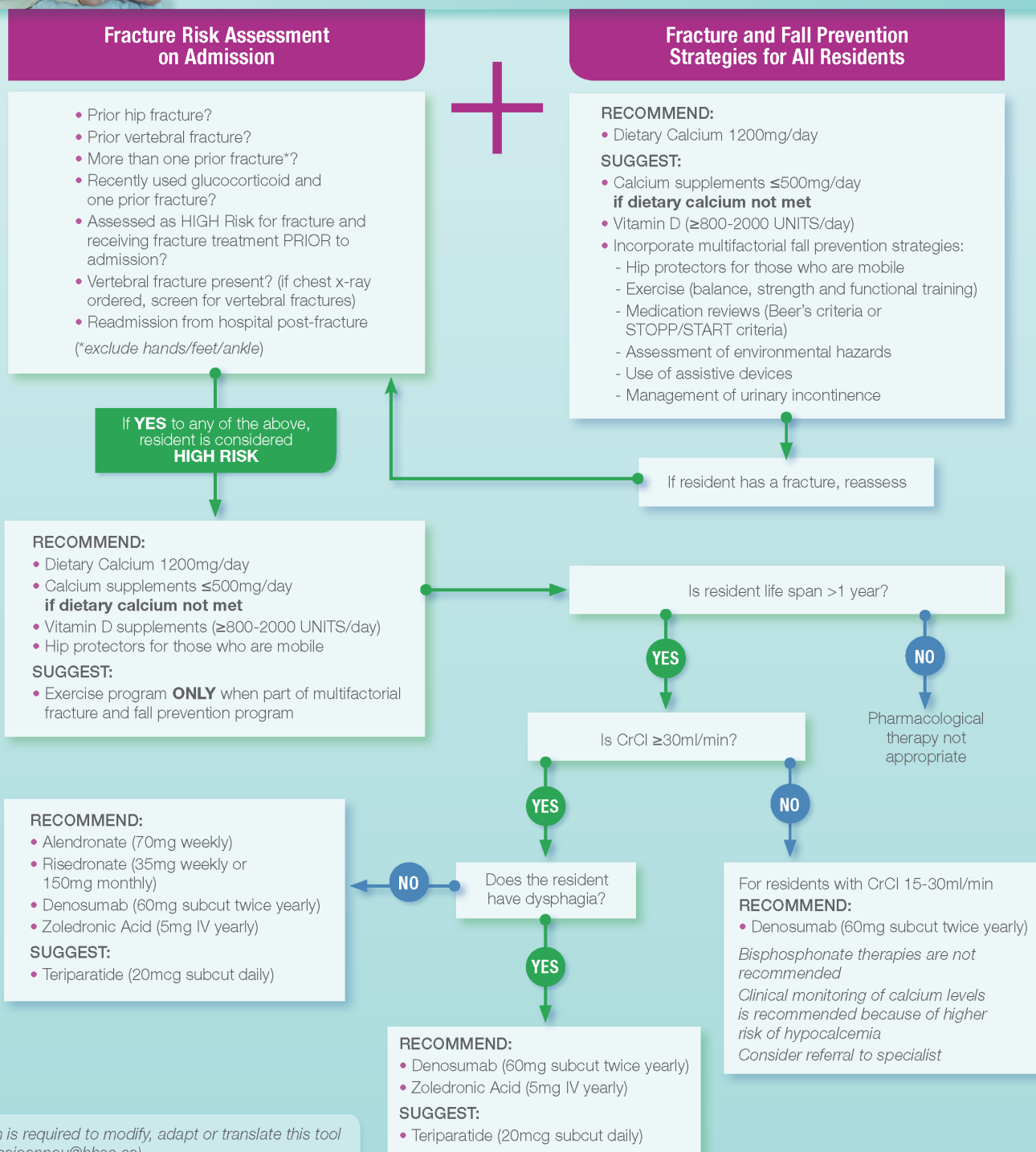
www.weedmd.com



JOIN US AT
THE ESPRESSO
CAFÉ FOR ALL
BREAKS AND
LUNCHES!



Fracture Prevention for Long-Term Care Residents



Permission is required to modify, adapt or translate this tool
(Email: Papaioannou@hhsc.ca)

This document is only to be used as a support decision tool.

Adapted from Papaioannou A, et al. CMAJ 2015;187(15), with permission



MANAGING *What* MATTERS™

- Operating 32 Long-Term Care and Retirement Homes in Ontario
- Communities located from Windsor to Prescott, and Niagara Falls to Gravenhurst, with many locations in the GTA
- Innovative, forward thinking and technology savvy organization driven by dedicated individuals pursuing creative projects and solutions
- Active engagement with homes' interdisciplinary team and Consultative Services to decrease use of antipsychotic medication, associated fall rates, and avoidable ED visits
- Measures and systems in place to ensure compliance with all laws, regulations, and standards and to enhance person-centered care
- A recognized leader in creating practical and innovative processes and programs as well as lasting partnerships that support healthy options for seniors

www.responsivegroup.ca



Ontario
Long Term Care
Clinicians

**SAVE THE
DATES!**

**SHERATON CENTRE
TORONTO HOTEL
TORONTO, ONTARIO**

2019 CONFERENCE

PRACTICAL PEARLS IN LONG TERM CARE

Annual Conference

Friday October 25, 2019 – Sunday October 27, 2019

Sheraton Centre Hotel, Toronto, Ontario

2019 LONG TERM CARE MEDICAL DIRECTOR CURRICULUM

Watch for upcoming information on the Medical Director Course, 2019

2020 CONFERENCE

PRACTICAL PEARLS IN LONG TERM CARE

Annual Conference

Friday October 23, 2020 – Sunday October 25, 2020

Sheraton Centre Hotel, Toronto, Ontario

Ontario Long Term Care Clinicians

1143 Wentworth St. West, Suite 202

Oshawa, ON L1J 8P7

office@oltcc.ca

T: 905-404-9545

F: 905-404-3727



www.oltcc.ca

@OnLTCC